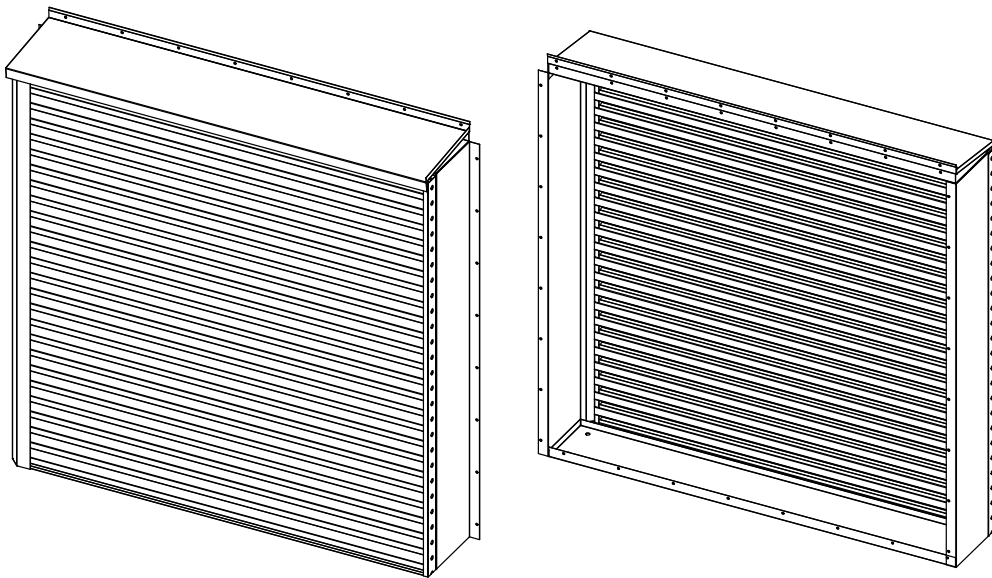


TUISKU surface-mounted snow covers Installation manual



The mounting instructions are the same for the following product series:

TUISKU-VS, TUISKU-PS, TUISKU-V and TUISKU-P

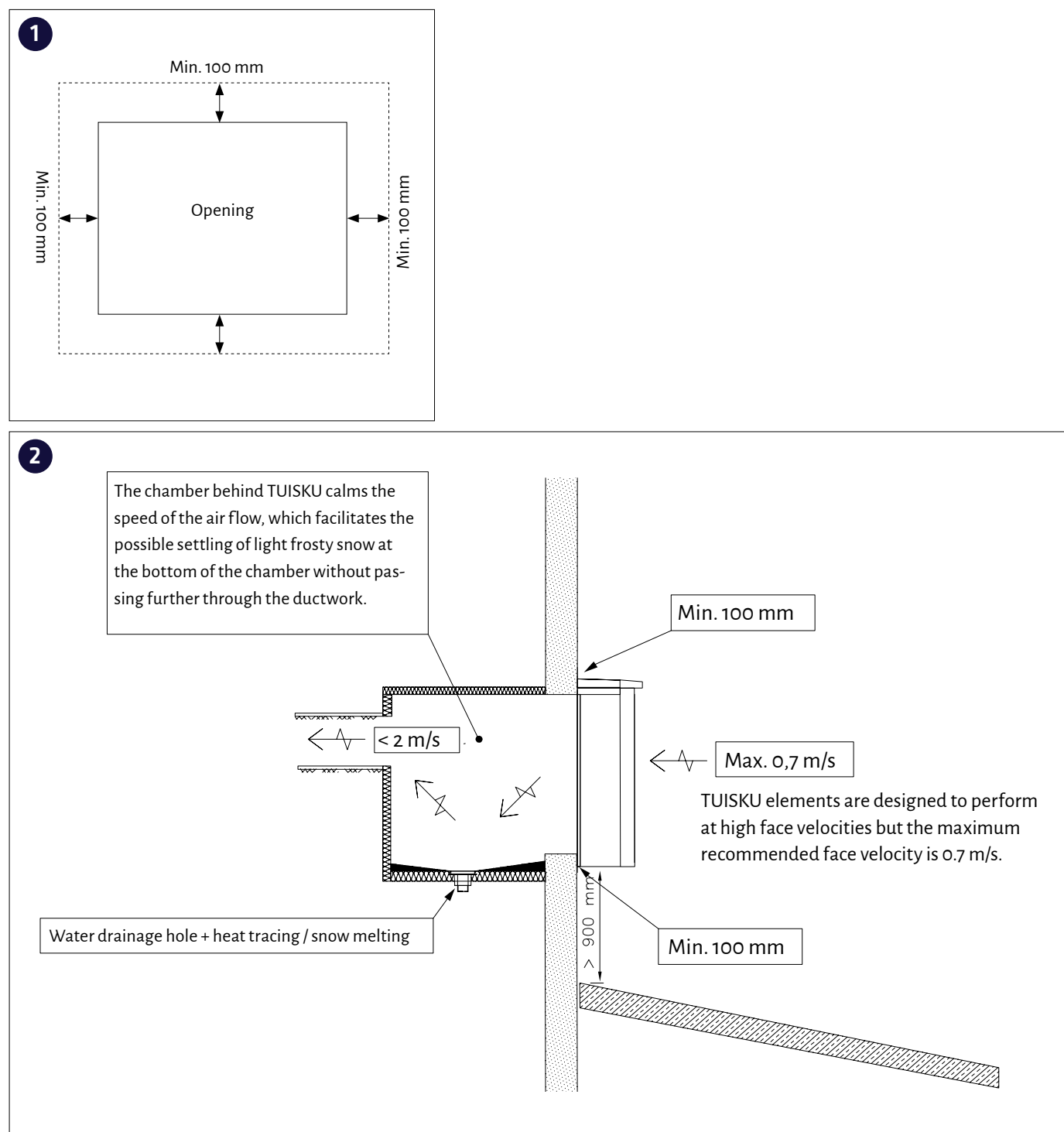
TUISKU-AF

TUISKU-O

The connection instructions of TUISKU-AF is in separate connection manual

TUISKU surface mounting

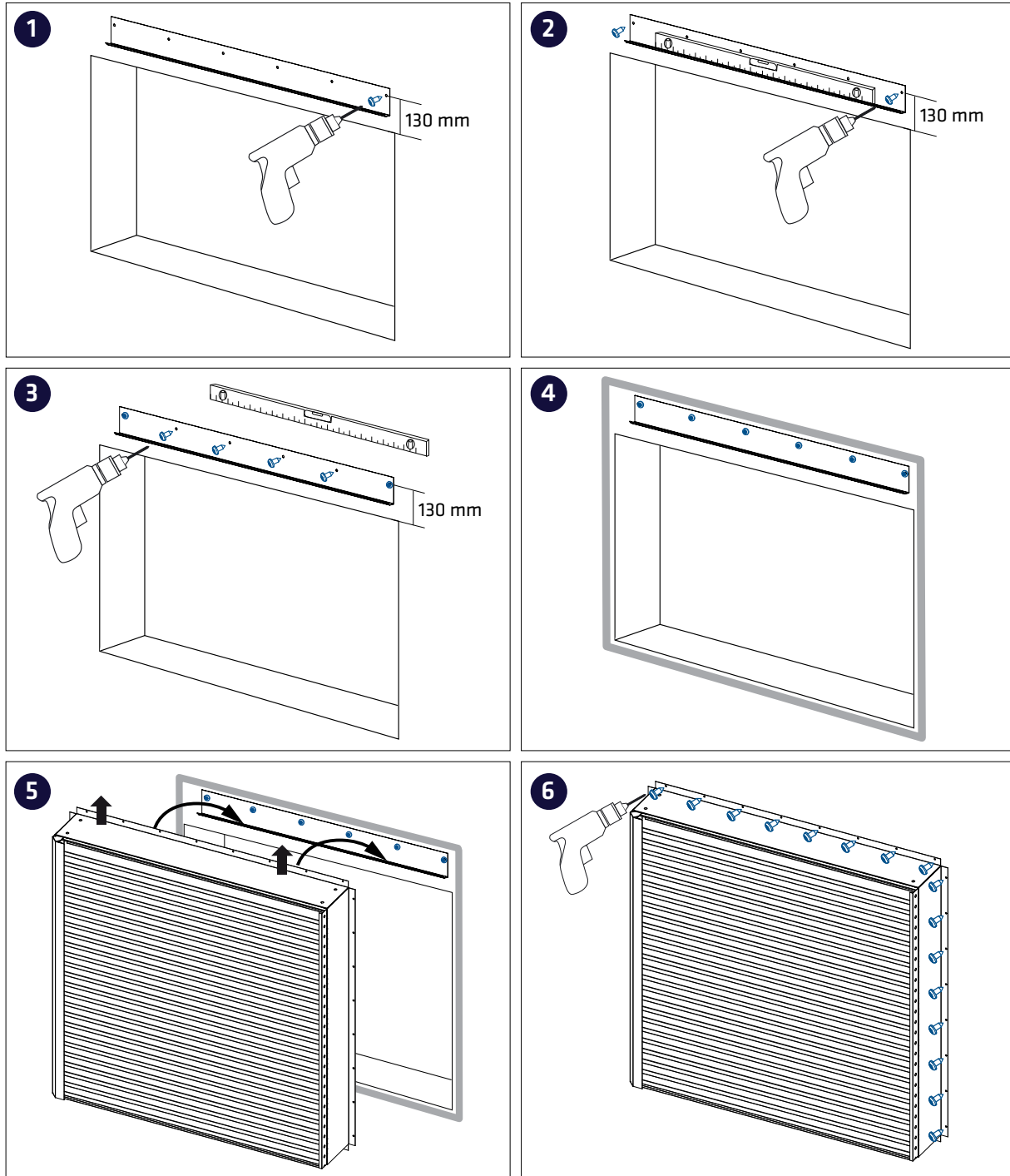
Dimensioning



It is advisable to build a chamber and drainage similar to the figure behind the snow covers to prevent light snow and water caused by exceptionally strong winds from getting into the ducts.

TUISKU surface mounting

1-piece surface mounting using J-profile that is included in the shipment.
NOTE! TUISKU can also be installed without the J-profile.



We recommend the following screw types or equivalent to mount the J-profile to the wall:

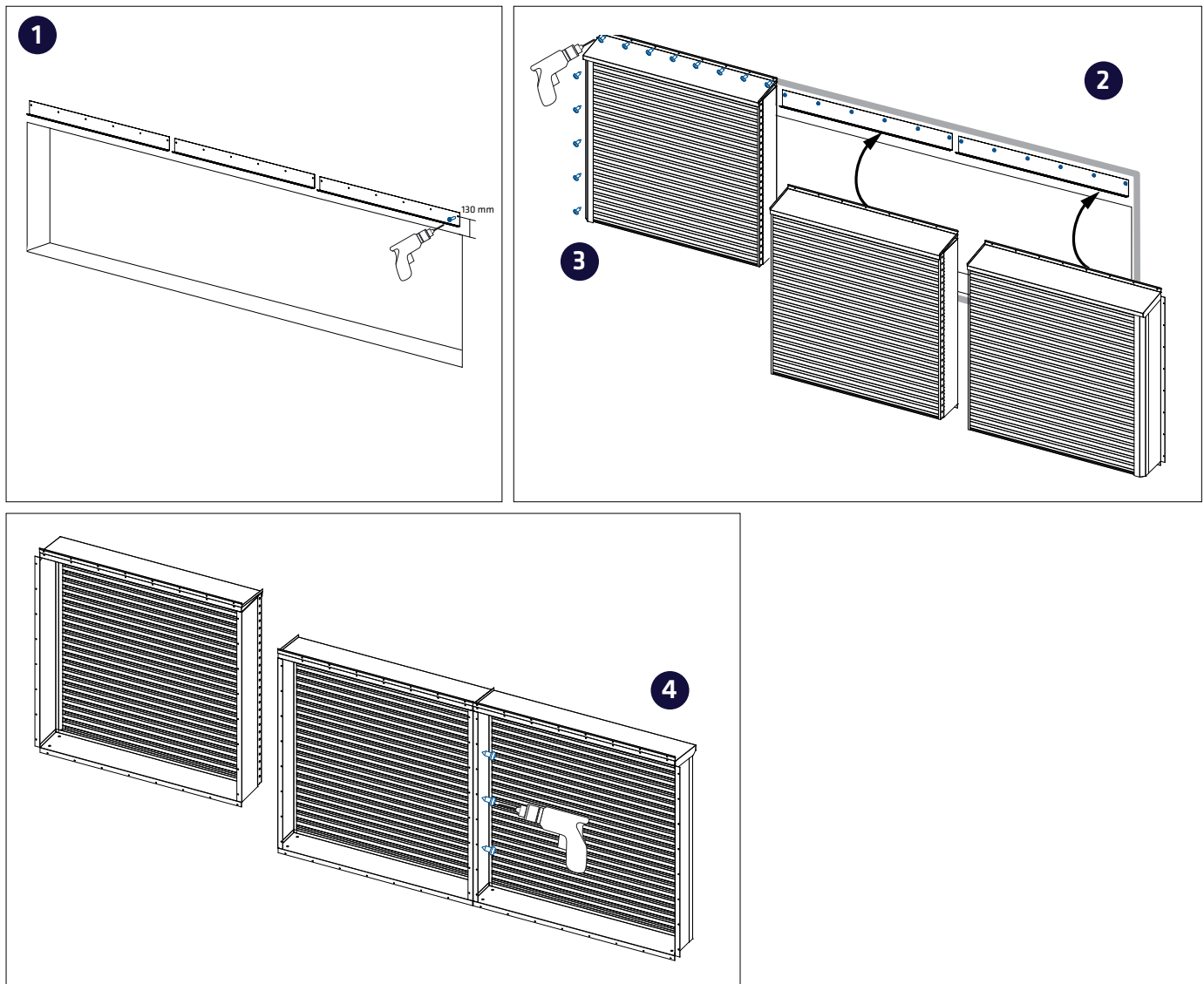
- Wood: TX-20 4.5X40 full thread chipboard screw csk.hd. Zn
- Concrete: Nyloc plug, Sormat NAT 8 (8x40 mm) + TX-20 4.5X40 full thread chipboard screw csk.hd. Zn
- Sandwich: Hexagon head tapping screw DIN 7504K ZN 4.2 x 13 mm drill point NOTE! maximum mounting load 45 kg/m2
- Steel (RHS or equivalent): EJOT JT2-6-6.3 x 25 mm zinc-plated drill point

We recommend the following screw types or equivalent in mounting the TUISKU to the wall:

- Wood: Farmer screw Ruspert 4.8x25-65 mm, RR, sharp point with washer
- Concrete: Concrete screw Fisher FBS 6 x 40/5 mm US or equivalent
- Sandwich: Sandwich panel screw with washer, drill point (4-14 MM) SPA 5.5 x L = panel thickness
- Steel: EJOT JT2-6-6.3 x 25 mm zinc-plated drill point

TUISKU surface mounting

Multielement TUISKU side-by-side



- 1 Install the J-profiles in the same way as in the 1-piece mounting.
- 2 Apply the sealing compound to the wall.
- 3 Lift the TUISKU elements in place and mount them to a load-bearing wall the same way as in 1-piece mounting.
- 4 Mount the TUISKU elements together with zinc-plated drill point screws EJOT JT2-6-6.3x25mm.

We recommend the following screw types or equivalent to mount the J-profile to the wall:

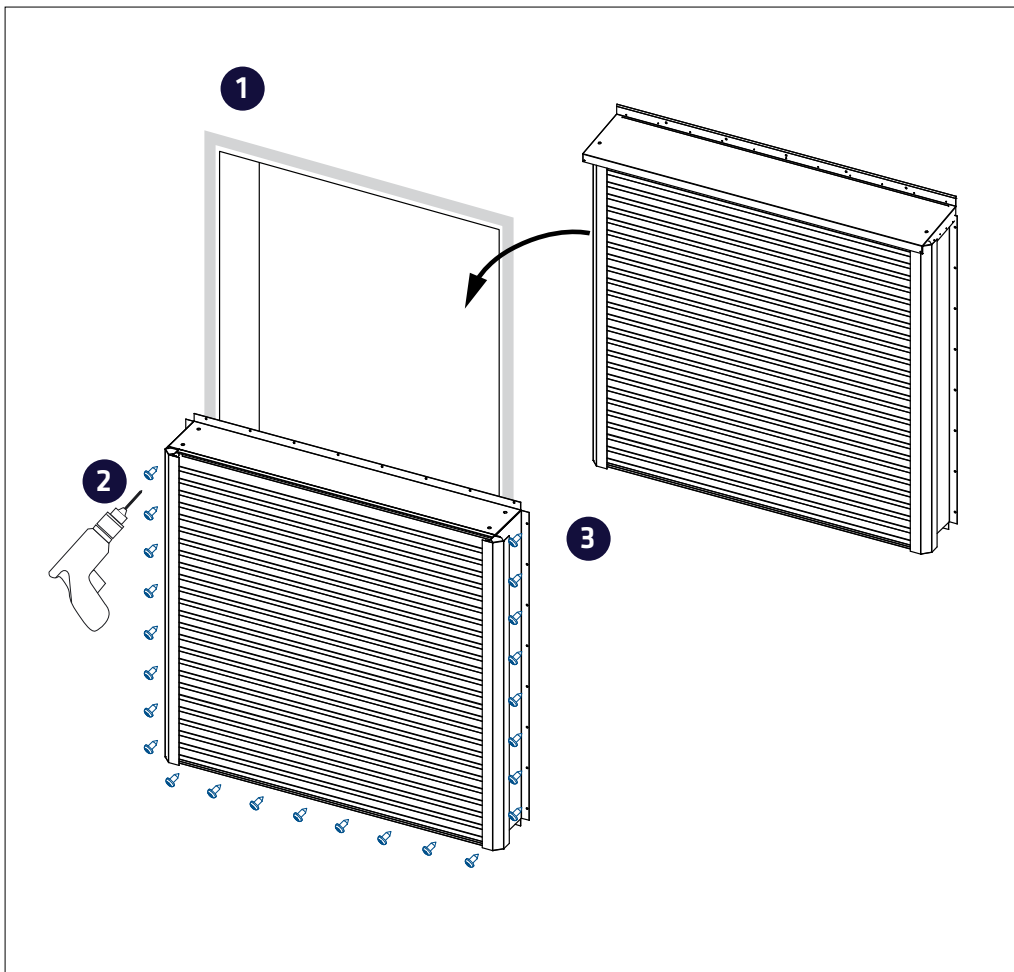
- Wood: TX-20 4.5X40 full thread chipboard screw csk.hd. Zn
- Concrete: Nyloc plug, Sormat NAT 8 (8x40 mm) + TX-20 4.5X40 full thread chipboard screw csk.hd. Zn
- Sandwich: Hexagon head tapping screw DIN 7504K ZN 4.2 x 13 mm drill point NOTE! maximum mounting load 45 kg/m2
- Steel (RHS or equivalent): EJOT JT2-6-6.3 x 25 mm zinc-plated drill point

We recommend the following screw types or equivalent in mounting the TUISKU to the wall:

- Wood: Farmer screw Ruspert 4.8x25-65 mm, RR, sharp point with washer
- Concrete: Concrete screw Fisher FBS 6 x 40/5 mm US or equivalent
- Sandwich: Sandwich panel screw with washer, drill point (4-14 MM) SPA 5.5 x L = panel thickness
- Steel: EJOT JT2-6-6.3 x 25 mm zinc-plated drill point

TUISKU surface mounting

Multielement TUISKU elements on top of one another



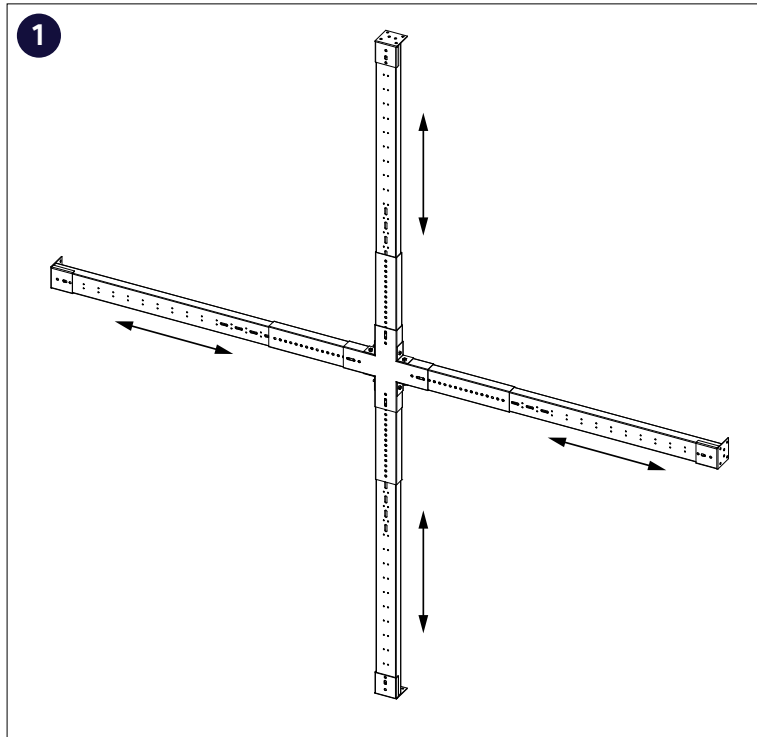
- 1 Apply the sealing compound around the opening and ensure that the juncture between TUISKU and the wall is insulated.
- 2 Lift the lower TUISKU element in place and mount it to the load-bearing wall.
- 3 Lift the upper TUISKU element in place and mount it to the wall.
It is recommended to also mount the TUISKU elements together with zinc-plated drill point screws EJOT JT2-6-6.3x25mm. Mounting through the base to the upper plate and/or through side plates.

We recommend the following screw types or equivalent in mounting the TUISKU to the wall:

- Wood: Farmer screw Ruspert 4.8x25-65 mm, RR, sharp point with washer
- Concrete: Concrete screw Fisher FBS 6 x 40/5 mm US or equivalent
- Sandwich: Sandwich panel screw with washer, drill point (4-14 MM) SPA 5.5 x L = panel thickness
- Steel: EJOT JT2-6-6.3 x 25 mm zinc-plated drill point

TUISKU surface mounting

TUISKU-AK installation frame (accessory)

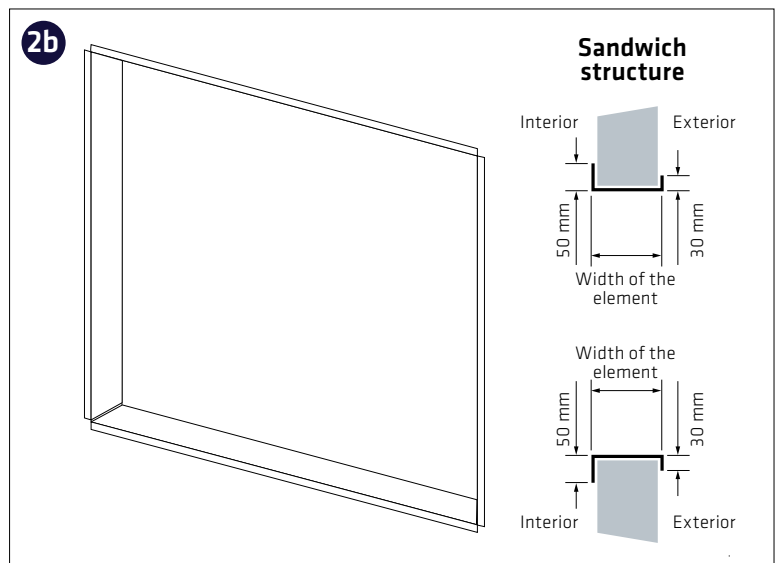
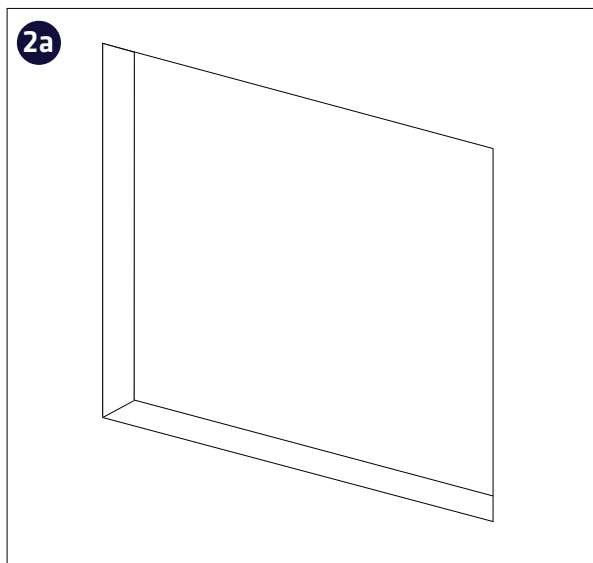


The TUISKU-AK installation frame is designed to make installing the multielement TUISKU pieces easier. The dimensions of the installation frame are adjustable to fit the opening.

When installing the TUISKU-AK installation frame to an opening with a Sandwich structure, the edges of the opening must be supported with suitable profiles.

NOTE! The TUISKU-AK installation frame must not be a part of a load-bearing structure! The load-bearing structure must be designed and approved by a structural engineer.

When installing TUISKU elements without an installation frame, a sufficient support must be built in the opening for TUISKU with the structural engineer's instructions.



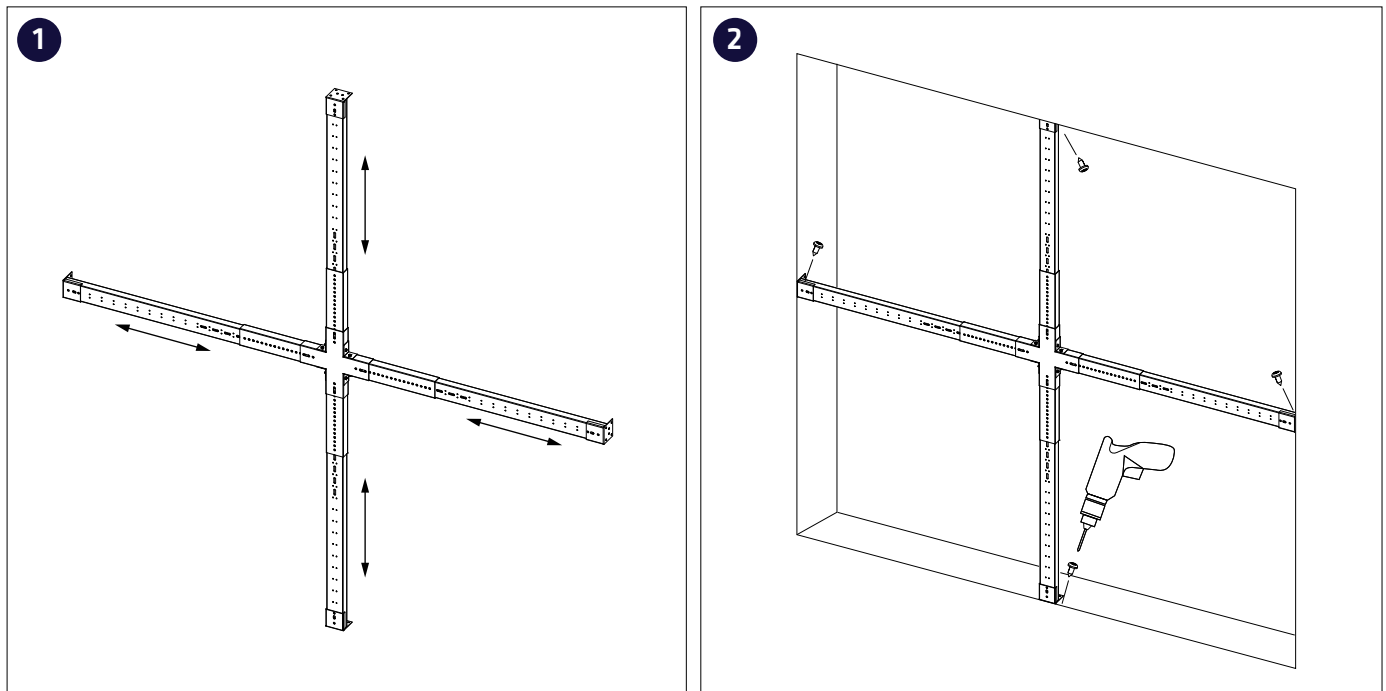
- 1 By opening the mounting bolts of the TUISKU-AK installation frame the size can be adjusted to fit the opening. After the adjustment, the bolts must be mounted with care.
- 2 In Sandwich-structured walls the edges of the opening must be supported with a metal profile made from hot galvanized structural steel S320GD+Z350 3.0 mm or equivalent.

We recommend the following methods or equivalent to mount the TUISKU-AK installation frame to the opening:

- Wood: TX-20 4.5X40 zinc-plated countersunk head full thread chipboard screw
- Concrete: Concrete screw Fisher FBS 6x40/5 mm US or equivalent
- Sandwich: Sandwich panel screw with washer, drill point 4-14 mm SPA 5.5 x L (L=panel thickness)
- Steel: EJOT JT2-6-6.3x25mm zinc-plated drill point

TUISKU surface mounting

Multielement TUISKU + TUISKU-AK installation frame



- 1 Measure the width and height of the opening and adjust the bearing frame to the right size.
- 2 Mount the TUISKU-AK installation frame securely to a load-bearing structure.
When installing TUISKU elements without an installation frame, a sufficient support must be built in the opening for TUISKU with the structural engineer's instructions.
NOTE! The TUISKU-AK installation frame must not be a part of the building's load-bearing structures.

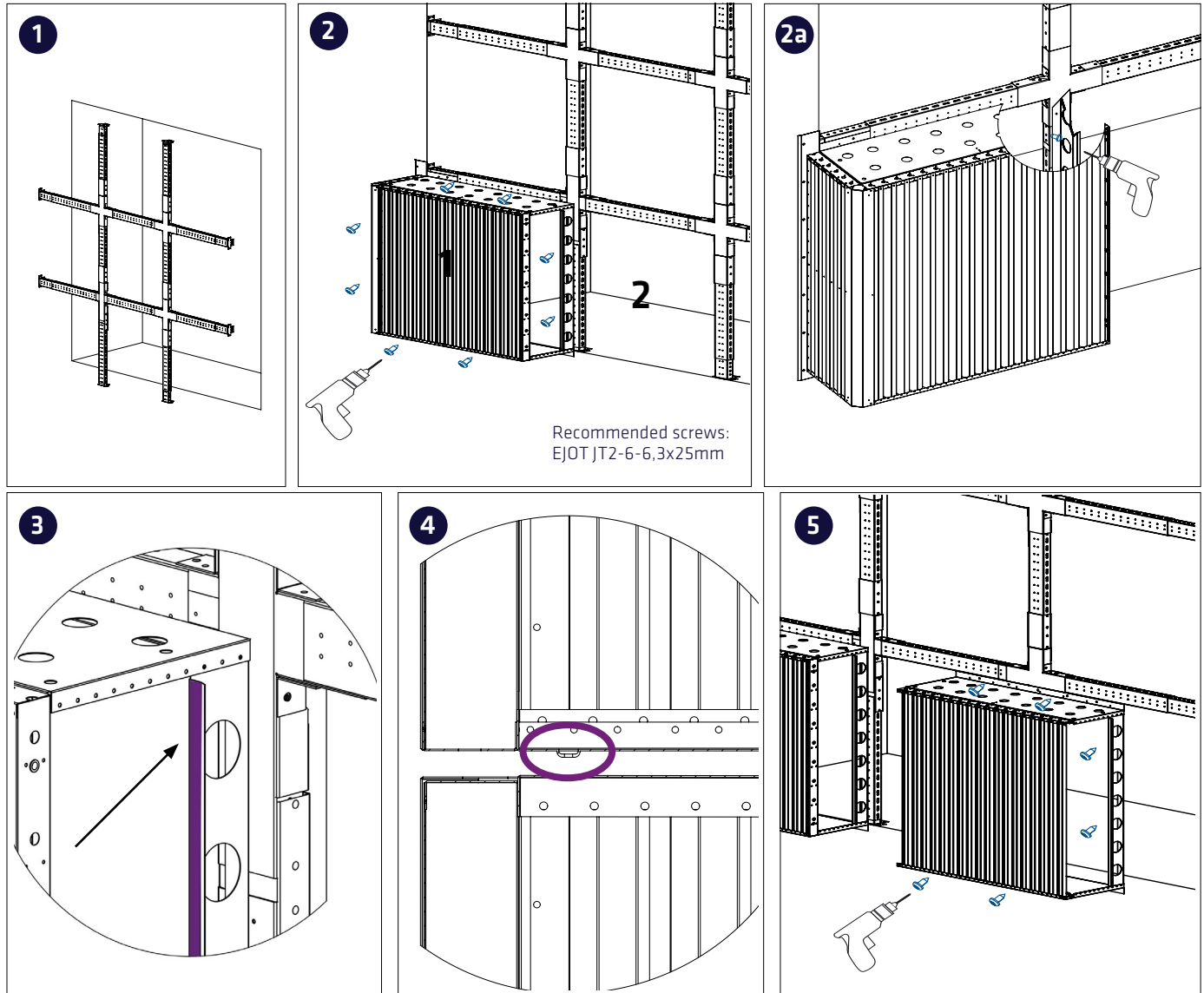
We recommend the following screw types or equivalent to mount the support frame inside the opening or to the edges of the opening:

- Wood: TX-20 4.5X40 full thread chipboard screw csk.hd. Zn
- Concrete: Concrete screw Fisher FBS 6 x 40/5 mm US or equivalent
- Sandwich: EJOT JT2-6-6.3 x 25 mm zinc-plated drill point + U-profile installation rails to the end of the panel
- Steel: EJOT JT2-6-6.3 x 25 mm zinc-plated drill point

The structure must always be approved by a structural engineer.

TUISKU with vertical vanes surface mounting

Multiement TUISKU-P and TUISKU-PS + TUISKU-AK installation frame, for example 9 -piece



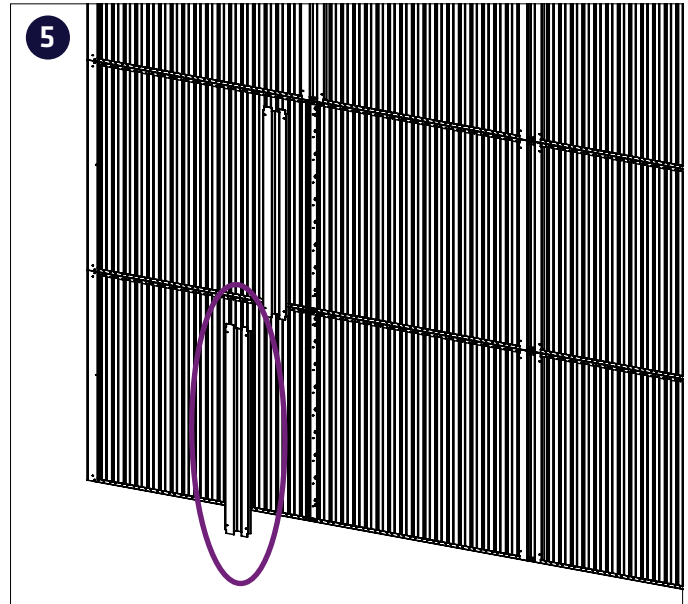
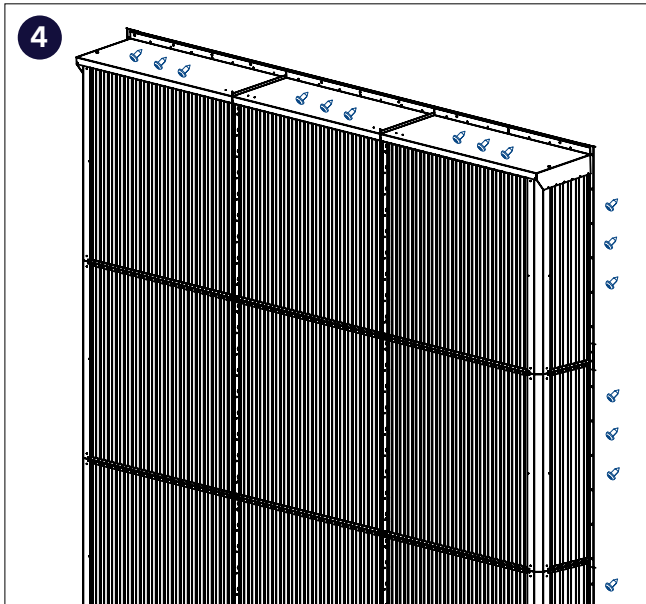
- 1 Install the installation frame according to the instructions on page 7.
- 2 Start installing TUISKU elements starting from the bottom row from the left as shown in the picture.
 - Attach TUISKU to the installation frame with drill point screws, starting from the bottom left.
 - From the right side, TUISKU is attached to the frame from the inside.
- 3 The next TUISKU is fastened in place so that the structure on the left side of the TUISKU goes into the locking hole on the right side.
- 4 There are holes in the upper part of the lower TUISKU into which the alignment pins on the bottom of the upper module sink.
- 5 Attach TUISKU to the mounting frame again with drill point screws.

The TUISKU elements are mounted together with zinc-plated drill point screws EJOT JT2-6-6.3x25mm.

NOTE: TUISKU-PS and TUISKU-P require a installing frame or a similar structure to which TUISKU is attached.

TUISKU with vertical vanes surface mounting

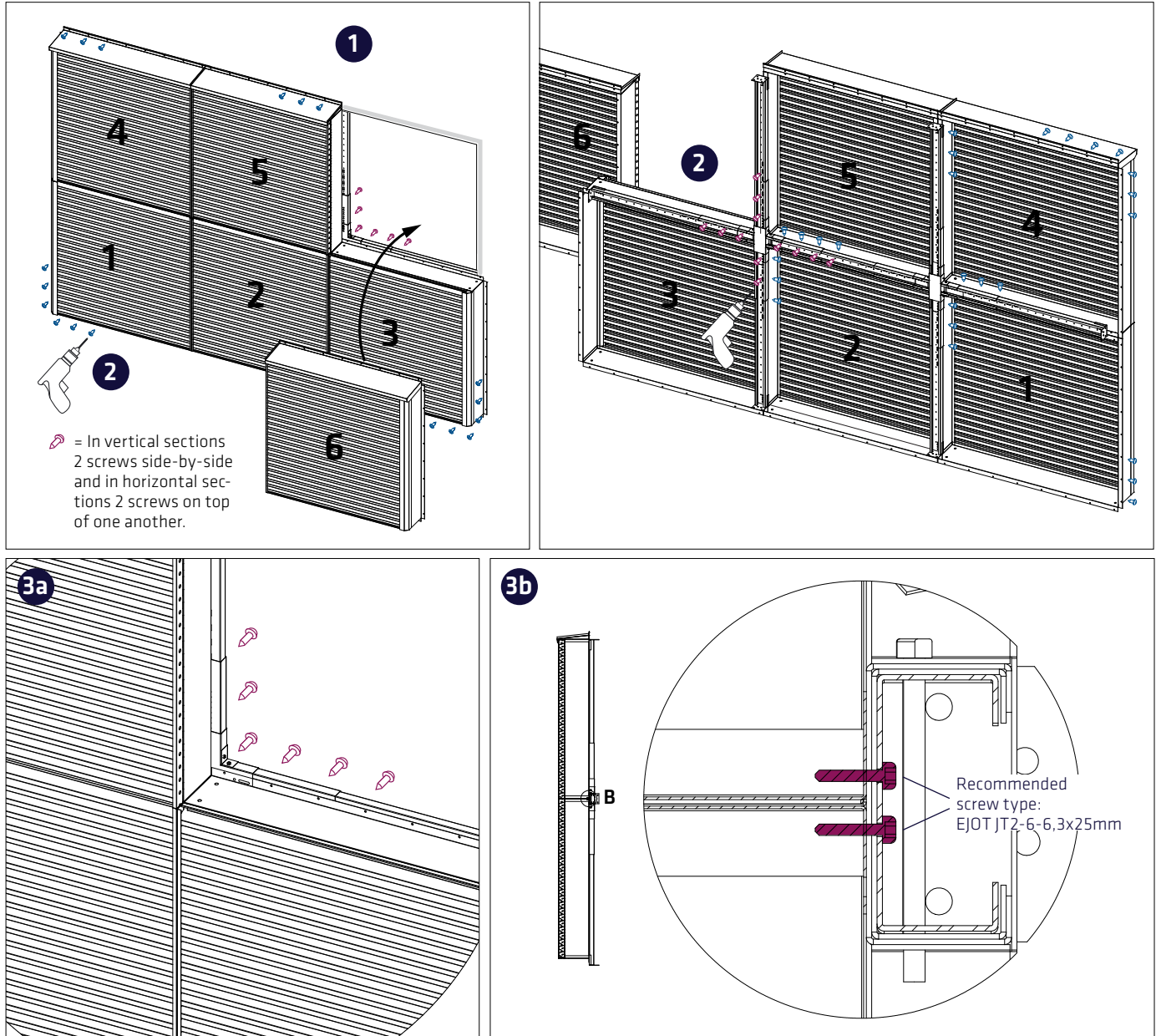
Multiement TUISKU-P and TUISKU-PS + TUISKU-AK installation frame, for example 9 -piece



- 4 Fasten the assembly to the installation frame with drill point screws.
- 5 The whole is finished by attaching the cover strips that come with the delivery to the front.

TUISKU with horizontal vanes surface mounting

Multiement TUISKU-V and TUISKU-VS+ TUISKU-AK installation frame, for example 6-piece



- 1** Apply the sealing compound around the opening and ensure that the juncture between TUISKU and the wall is insulated.
- 2** Start installing from the bottom corner as is shown in the figure (1).
 - The upper edges of the lower TUISKU elements are mounted to the horizontal section of the installation frame. Lower edges and sides are mounted to the load-bearing structures.
 - The upper TUISKU elements are lifted on top of the lower TUISKU elements and then mounted from the sides and the top into the load-bearing structure.
- 3a** TUISKU is mounted on the TUISKU-AK installing frame with zinc-plated drill point screw EJOT JT2-6-6,3x25mm.
- 3b** The TUISKU elements are mounted together with zinc-plated drill point screws EJOT JT2-6-6,3x25mm.

If you have any questions concerning TUISKU installation, you can contact the Climecon customer service

Tel. +358 (0)20 1986 600

Email info@climecon.fi

Climecon Oy

Lämmittäjänkatu 4 A
00880 HELSINKI
FINLAND

climecon.fi