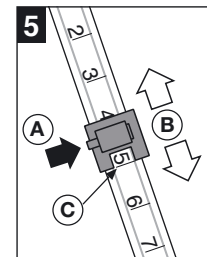
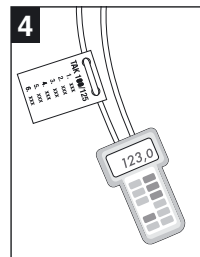
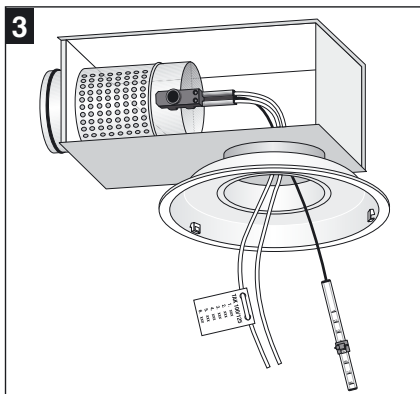
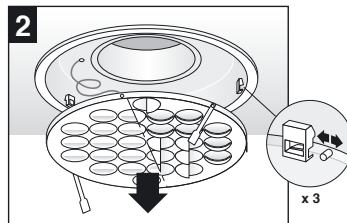
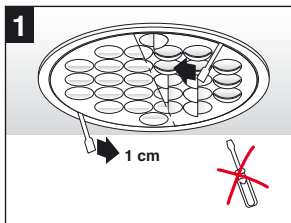


# MAP / MAK + TAK

$$q_v = k \times \sqrt{\Delta p_m}$$

2.1.2007 alkaen

MAP / MAK + TAK >		k				
		100 / 125	125 / 160	160 / 200	200 / 250	250 / 315
Säätöasento Injusteringsläge Adjustment settings	1	1,9	3,0	4,5	9,0	18,0
	2	2,4	3,7	5,3	10,0	19,1
	3	2,9	4,3	6,1	11,0	20,1
	4	3,3	4,8	6,8	12,0	21,0
	5	3,7	5,4	7,6	13,0	22,0
	6	4,0	5,9	8,4	14,0	23,0
	7			9,2	14,7	24,0
	8			10,0	15,4	25,0



Mittaa paine-ero / Mät injusteringstrycket /  
Measure the pressure drop

A Avaa lukitus / Öppna låset / Open the lock  
B Sääda ilmavirta / Injustera luftflödet /  
Regulate the airflow

C Kohdista merkiviivaan / Anpassa till  
sträcket / Adjust to the line

D Lukitse / Lås / Lock

Suuttimien suuntaus  
Inställning av dysorna  
Turning the nozzles

