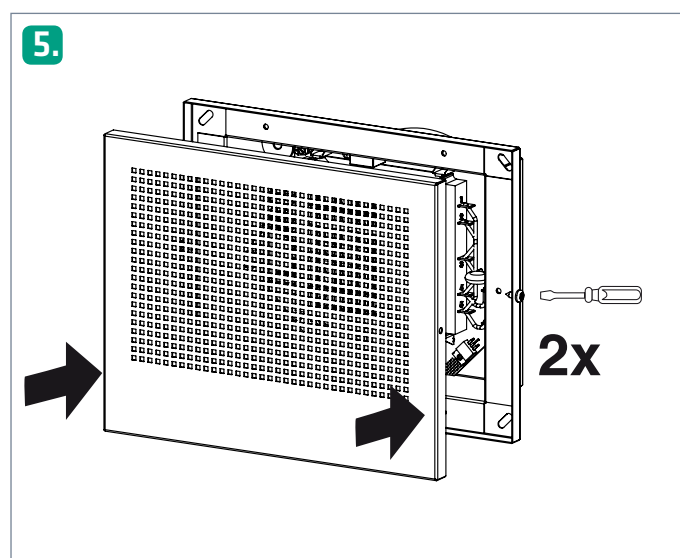
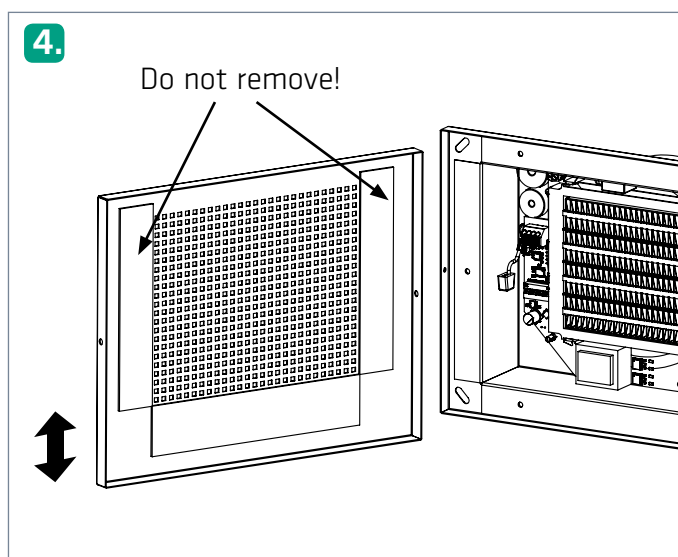
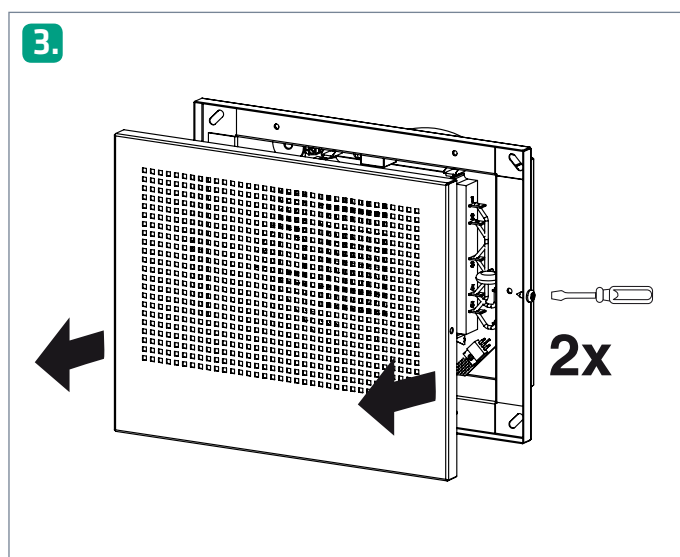
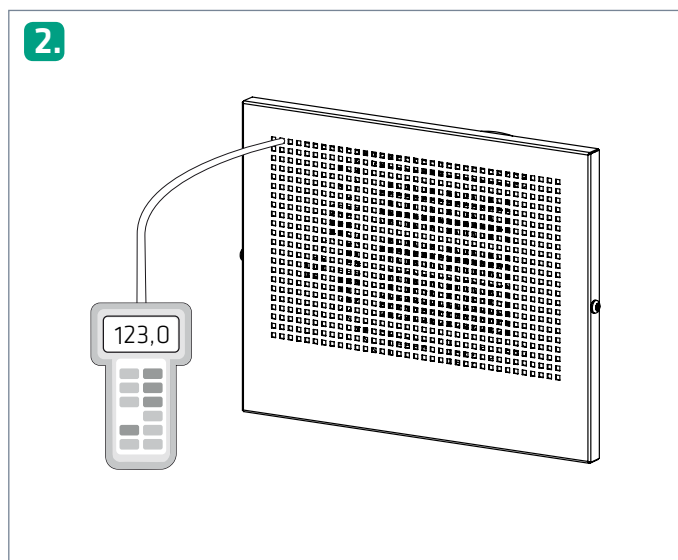
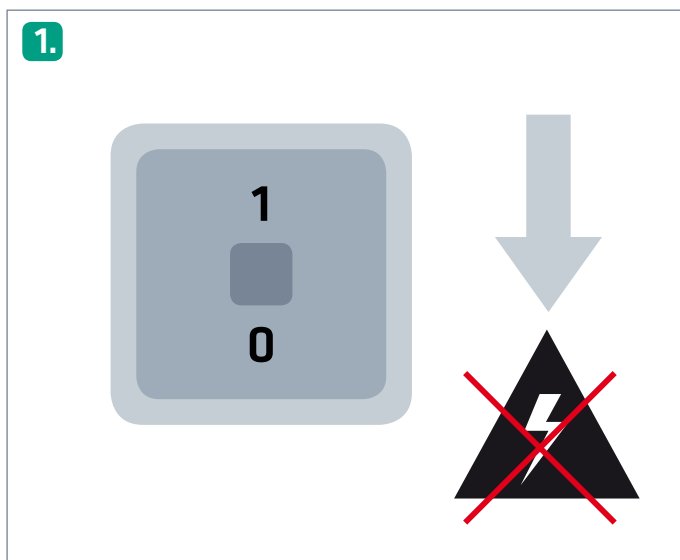


Adjustment manual ECO-F

NOTE! Electrical connections may only be made by a professional electrician.

Warning! The device carries a voltage of 230 V! Disconnect from the supply voltage before adjustment.



	k
ECO-F	125
	22*27
Suljettua riviä	0
Stängda rad	4
Closed rows	8
Rangées fermées	12
Geschlossene Reihen	16
	6,4
	5,0
	3,9
	2,5
	1,5