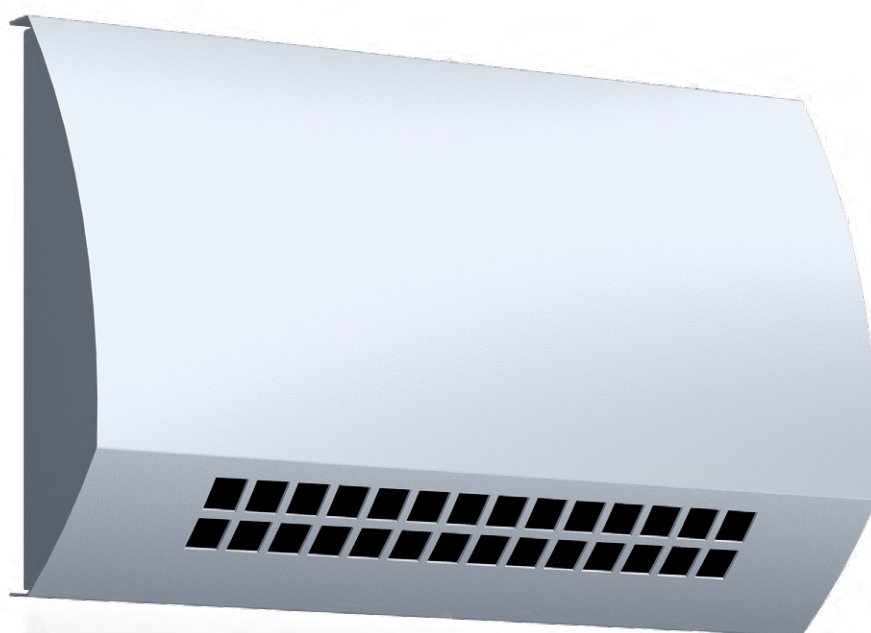


TINOi



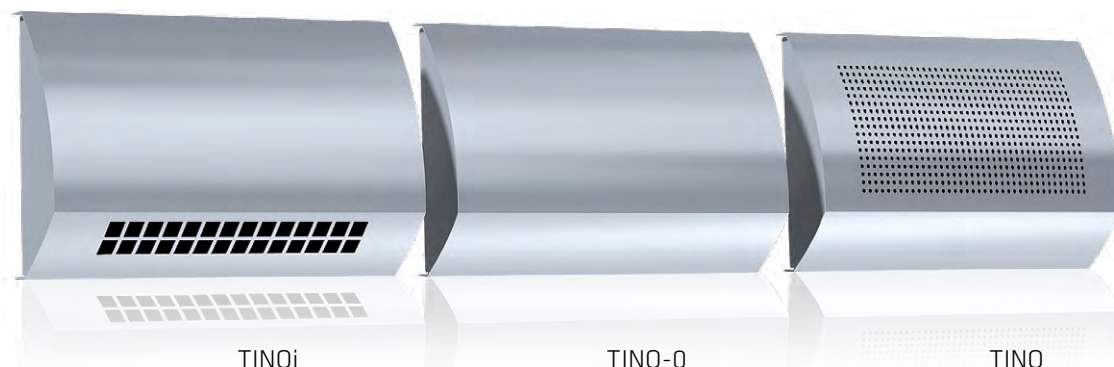
An elegant exhaust air valve
TINOi is part of the TINO series.

TINOi

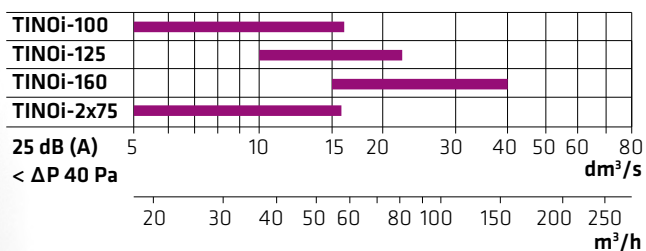
TINOi is an attractively styled exhaust air valve. TINOi is congruently designed with the TINO supply air diffuser and it is possible to build a solid entity and an interior element by combining the TINO series, which ensure both draft-free and silent supply air as well as air extraction.

TINOi

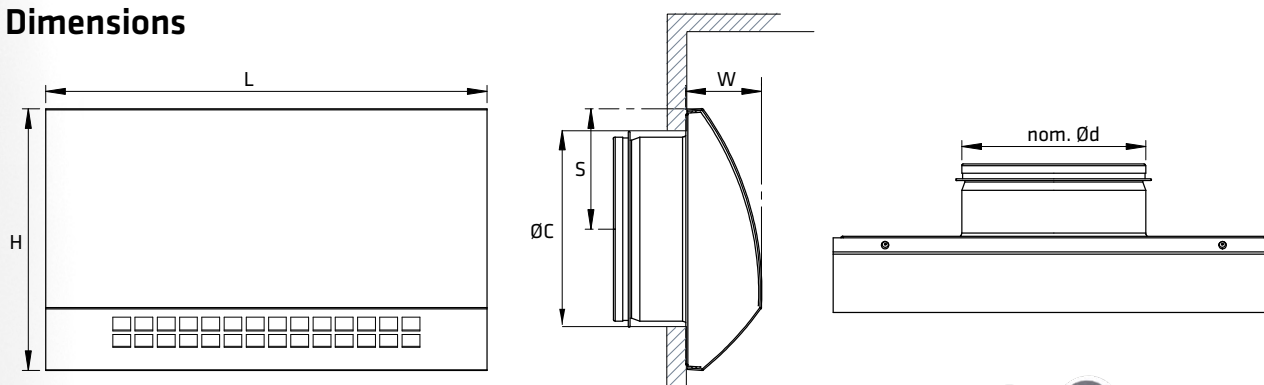
TINOi features reliable measurement combined with quick and accurate adjustment. With TINOi, it is possible to build an interior element by combining it with the **TINO** supply air diffuser and the blind design element **TINO-0**. TINOi-100 and TINOi-125 are type approved smoke dampers.



Quick Guide



Dimensions



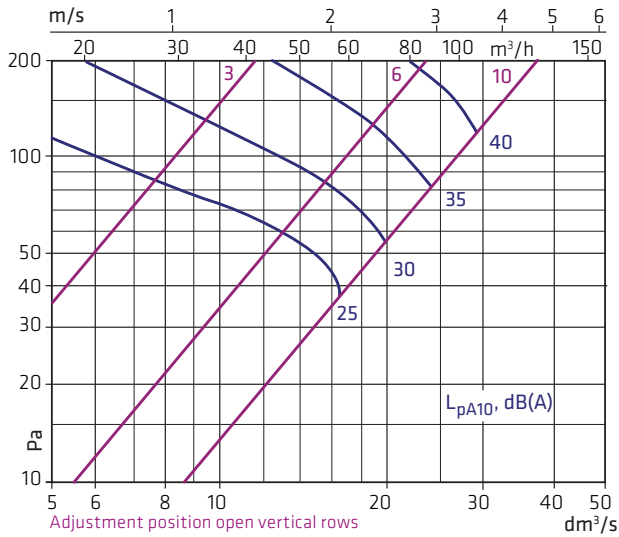
TINOi-D is designed for use with flexible plastic ducts. Connections 2 x Ø75. Other dimensions same as TINOi-100.

	nom. Ød	Ø	ØC	L	H	W	S	kg
TINOi-100	100	1xØ	115	255	150	42	68	0,7
TINOi-125	125	1xØ	140	298	175	50	81	0,9
TINOi-160	160	1xØ	175	357	210	62	98	1,3
TINOi-2x75	75	2xØ	-	255	150	42	59	0,7

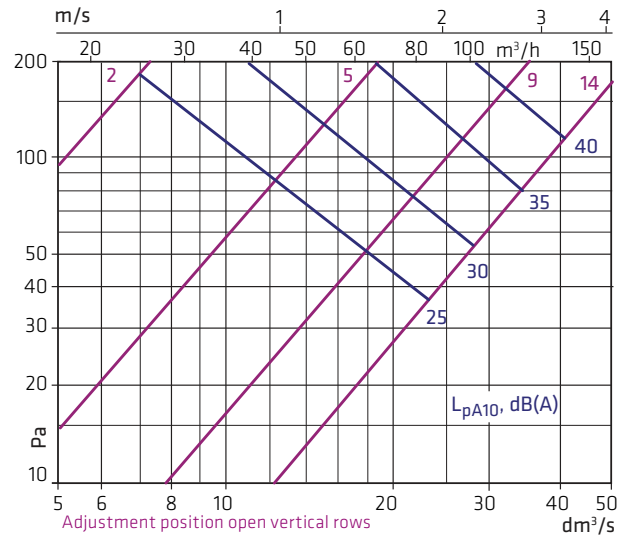
Dimensioning

The graphs are not intended for adjustment.

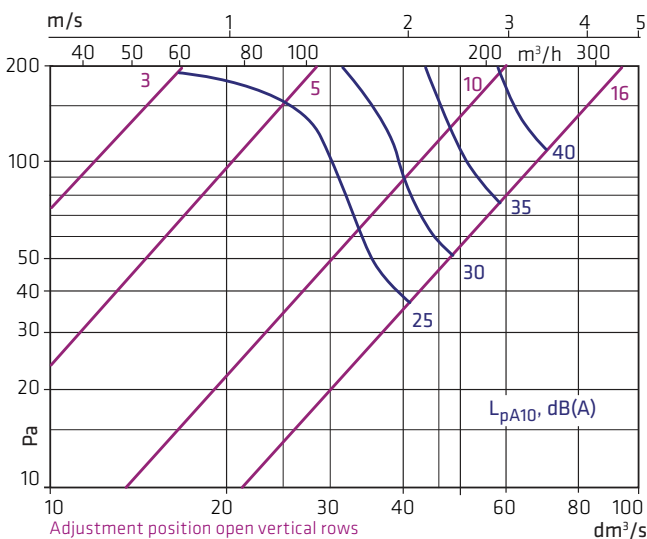
TINOi-100



TINOi-125



TINOi-160



Airborne sound insulation

Sound attenuation for air ducts between rooms $D_{n,e,w}$ dB

Supply air

Size	TINOi	TINOi+VAL	TINOi+VAM
100	42	60	62
125	41	60	60
160	41	59	58

VAL is a dampening box with angular air flow.

VAM is a dampening box with straight-through air flow.

Sound attenuation

Sound level will increase if cover distance is below $3 \times \varnothing d$:

- after bend max +1 dB (A)
- after T joint +8 dB (A)

