

# StandardPlus



## **INSTALLATION, ADJUSTMENT, OPERATING AND MAINTENANCE INSTRUCTIONS**

# 1. GENERAL

These are the installation, adjustment and maintenance instructions for Climecon StandardPlus hoods.

The model range of Climecon StandardPlus hoods includes:

- StandardPlus hoods
- StandardPlus hoods with capture air
- StandardPlus hoods with supply air and capture air

Make sure you read and understand these installation, adjustment and maintenance instructions before starting to install and use the product. If you have any questions about the installation or operation of the product, please contact the Climecon customer service.

**Climecon Oy**  
**Lämmittäjäkatu 4 A**  
**FI-00880 HELSINKI, FINLAND**  
**Tel. 020 198 6600**  
**Fax 020 198 6609**

## 1.1 Receiving the goods

Check that the delivered product batch is according to your order and all the parts stated in the delivery note are included. The carrier of the cargo should be informed immediately about errors in the delivery and incorrect delivery as well as possible damages occurred during transportation, and the respective notice should also be sent to Climecon or the distributor.

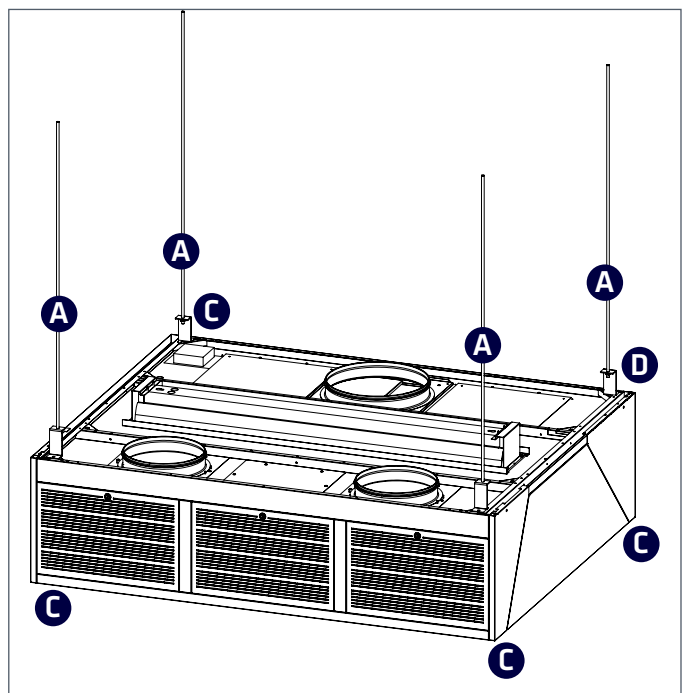
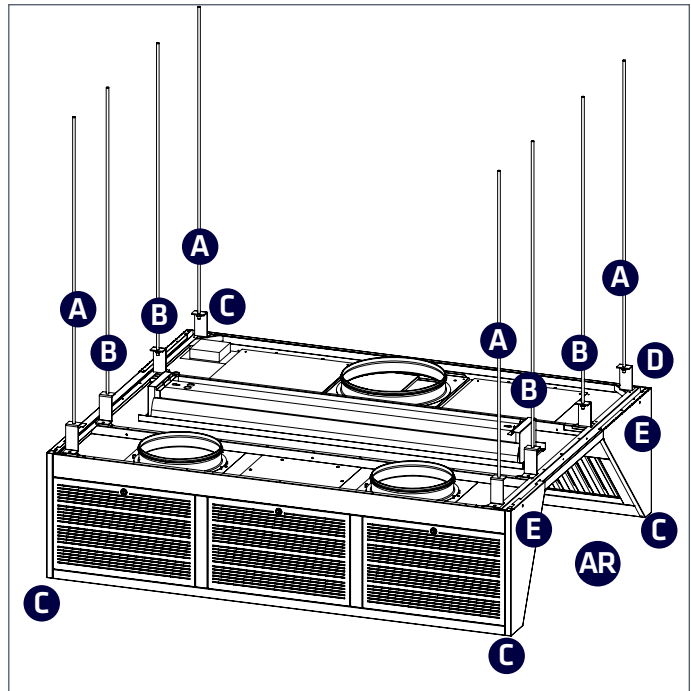
The term of notice is 5 days from delivery. Climecon Oy shall take no responsibility for costs arising from the replacement of products, which had not been installed according to the installation instructions.

In case of problems you should contact the Climecon customer service!

## 2. INSTRUCTIONS FOR INSTALLATION OF STANDARDPLUS HOODS

### 2.1 Installation of the hood

1. Mount the thread bars (A) to the correct positions in the ceiling. NOTE!  
Thread bars are not included in delivery!  
If the hood features an open side (AR), the hood should also be supported from the middle of the open side (B).
2. Lift the hood up from the corners (C), keeping it steady
3. Install adaptor brackets (D) to the thread bars and the hood
4. Check that the hood is horizontally
5. Remove any possible transportation supports
6. Fix adjacent hoods to one another through the holes (E) in the upper edge of each hood, using M6 bolts and nuts.



### 3. INSTRUCTIONS FOR MAINTENANCE OF STANDARDPLUS HOODS

Due to hygiene and fire safety in the kitchen, but also to ensure that the ventilation functions it is important to keep the kitchen equipment clean. The cleaning interval of Climecon StandardPlus hoods depends on their use and should be determined on the basis of the level of use.

The hoods can be cleaned with cleaning agents, which are suitable for cleaning stainless steel. Extremely strong alkali (pH > 11) should be avoided. The Climecon UV lamps do not need cleaning in case of normal use.

#### 3.1 Cleaning the hood

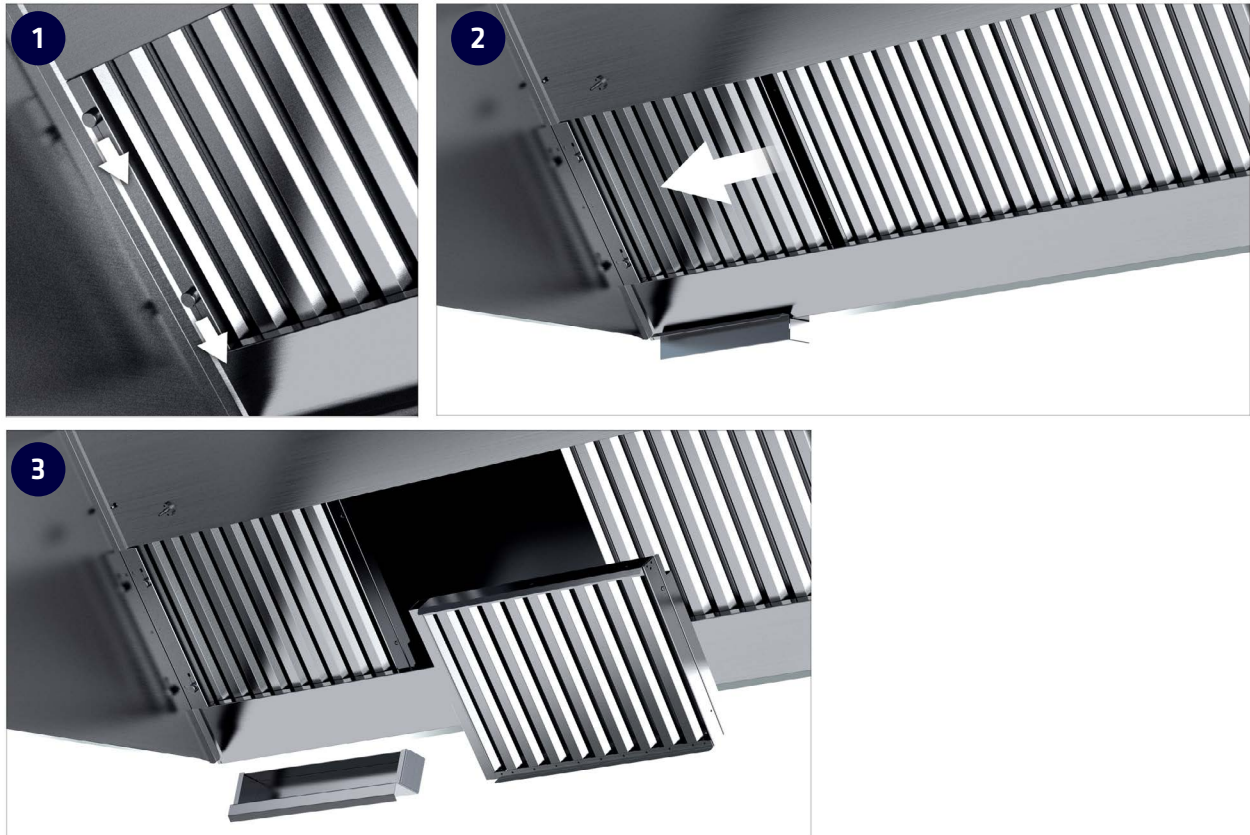
1. The surfaces of the hood should be cleaned by wiping lightly.
2. Clean the side troughs and grease pans of the hood. Grease pans are machine-washable.
3. Gently wipe the covering glass of lights, if necessary.
4. Clean the exhaust air chamber, if necessary. See the instructions for removing the grease filters in subsection 6.2 Removing the grease filters.
5. Clean the supply air modules, if necessary.

Supply air modules can be easily removed by opening first the fixing mechanism at the top of the module with the help of a screwdriver and then pulling the supply air module away from the supply air unit.



Grease filters, grease pans and supply air modules are machine-washable.

## 4. REMOVING GREASE FILTERS



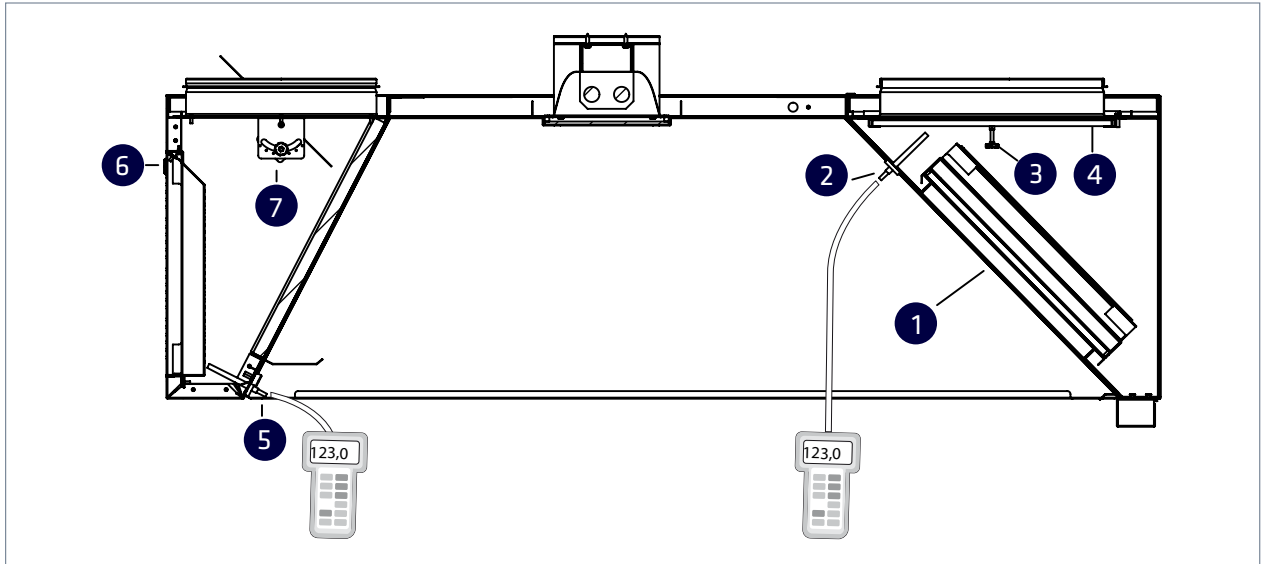
1. Make sure the locking system of the grease filters is open by checking that the hand screws are in the lower position.
2. Move the grease filter on far left more to the left.
3. First remove the second grease filter from the left and then the other grease filters. Grease filters are machine-washable.
4. Clean the exhaust air chamber if necessary.

### 4.1 Replacing the fluorescent tubes in the lights

1. Open the covering glass of the lights by opening the fixing screws.
2. Replace the fluorescent tubes.
3. Check that the gaskets are in good condition.
4. Re-install the covering glass.

## 5. INSTRUCTIONS FOR ADJUSTMENT OF STANDARDPLUS HOODS

### 5.1 Adjusting the supply air, exhaust air and capture air flow



#### Adjusting the supply air flow

- First measure the pressure drop at the measuring connection (5) of the supply air chamber
- Remove supply air modules (6), using a screwdriver
- Adjust the supply air by turning the adjusting damper (7) inside the supply air chamber
- Lock the adjusting damper with a locking screw
- Re-install the supply air modules (6) to their places
- Measure the pressure drop at the measuring connection (5) of the supply air chamber
- Repeat the above procedure, if necessary

#### Adjusting the exhaust air flow

- Carefully remove the grease filter cartridge (1) by pushing its bottom edge inwards while lifting the upper edge up and away from the mounting groove
- Open the locking screw (3) of the adjusting damper (4)
- Increase or decrease the suction opening by moving the damper in its sliding rails
- Install properly the filter cartridge(s)
- Measure the pressure drop at the measuring connection (2) of the chamber
- Repeat the above procedure, if necessary
- Finally lock the damper with a locking screw and check that the filter cartridges are properly in position

#### Adjusting the capture air

The thrust length of capture air can be adjusted. You can adjust the thrust by first turning the hand screws of the capture air unit, then moving the screws sideways and finally locking in position by tightening the hand screws.



## TABLE OF THE K-VALUES OF STANDARDPLUS HOODS

Hood model	Exhaust air/Number of separators (pcs)											
	1	2	3	4	5	6	7	8	9	10	11	12
CleanMaster®	18,5	37	55,5	74	92,5	111	129,5	148	166,5	185	203,5	222
StandardPlus, grease	21,6	43,2	64,8	86,4	108	129,6	151,2	172,8	194,4	216	237,6	259,2
StandardPlus, condensation	22,7	45,4	68,1	90,8	113,5	136,2	158,9	181,6	204,3	227	249,7	272,4

Height of the hood	Supply air/Hood width (mm)					
	800	1000	1500	2000	2500	3000
H=560 mm	28	45	67	90	112	135
H=400 mm	22	42	64	85	106	127
H=300 mm	22	33	49	66	82	99

Adjustment position	Control air/Hood width (mm)					
	800	1000	1500	2000	2500	3000
Max (Full open)	1,4	2,8	4,2	5,6	7,0	8,4
Min (Half open)*	0,6	1,2	1,8	2,4	3,0	3,6

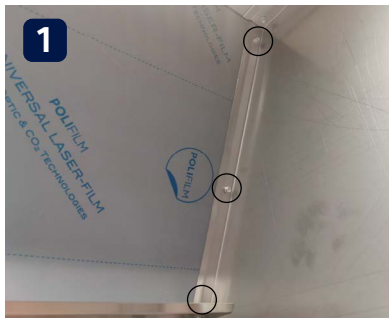
\*Recommended to be used if supply air pressure exceeds 15 Pa.



## REMOVING THE PANELS AND FINISHING THE SEAM



For the installation of a multi-module hood, the panel/s must be removed between the modules. Removing the panels is quick and easy.



1 Remove the screws that secure the panel to the hood structure.



2 Fill the holes left by the screws with pop rivets (3.2 mm). We recommend pressure-resistant pop rivets to maintain a level of hygiene.



3 Tape both sides of the seam to prevent the adhesive from spreading to other surfaces.



4 Apply glue to the seam with moderate pressure to seal the seam. We recommend 3M™ Adhesive Sealant 760 UV adhesive for sealing. Finish the sealing line with a suitable tool.



5 Make sure the seam is successful and neat.